

Test it now for
free for **30 days!**

SCAMAX® Scan+

The Performance Booster

High performance becomes maximum performance: this intuitively operated premium scan client fully utilizes the potential of your SCAMAX® production scanner.

IntoTec production scanners rank among the most powerful on the ECM market. With SCAMAX® SCAN+ they reach their peak performance. This cost-effective premium scan client in familiar MS Office look-and-feel makes the entire scope of scanner functions available even at top scanning speed and it can be easily integrated in existing document and content management systems. For the most efficient and highest-quality scanning projects of all sizes.



| Function | SCAMAX® scan | SCAMAX® scan+ |
|--|--------------|---------------|
| Single scan/ batch scan | ■ | ■ |
| Dual stream/ Multi stream | ■ | ■ |
| Second TWAIN source | ■ | |
| Max. pages displayed | 2 | 8 |
| Thumbnail view/ tree view | ■ | ■ |
| Freely definable shortcuts | ■ | ■ |
| Freely configurable project templates | upto 2 | ∞ |
| Use of scan counters | ■ | ■ |
| Blank page detection via scanner info or post scan | ■ | |
| Deletion marker for detected blank pages or manual | ■ | |
| 1D/2D barcode recognition via 3 integrated engines** | ■ | |
| Character recognition OCR (Open Source) | ■ | |
| Document separation via scanner (barcode /patch /counter) | ■ | |
| Document Separation, internal (barcode/OCR/manual/etc.) | ■ | |
| Indexing via scanner information, barcode, OCR & manual | | ■ |
| Manual image processing (post scan) | | ■ |
| Output format: TIFF, multipage TIFF, JPEG | ■ | ■ |
| Output format: PDF/A and others* | | ■ |
| Output Files: index, signal, TXT, XML, etc. | | ■ |
| Customising possible via PowerShell script | | ■ |
| Export process manager in the background (tasks of its own) | | ■ |
| Output to conventional DMS/ECM systems | | ■ |
| Statistics module | | ■ |
| Multilanguage | ■ | ■ |
| Docking windows | ■ | ■ |
| Easy import/ export of project templates | ■ | ■ |
| Free updates | ■ | ■ |
| Digital license or hardware dongle (optional) | | ■ |

SYSTEM REQUIREMENTS

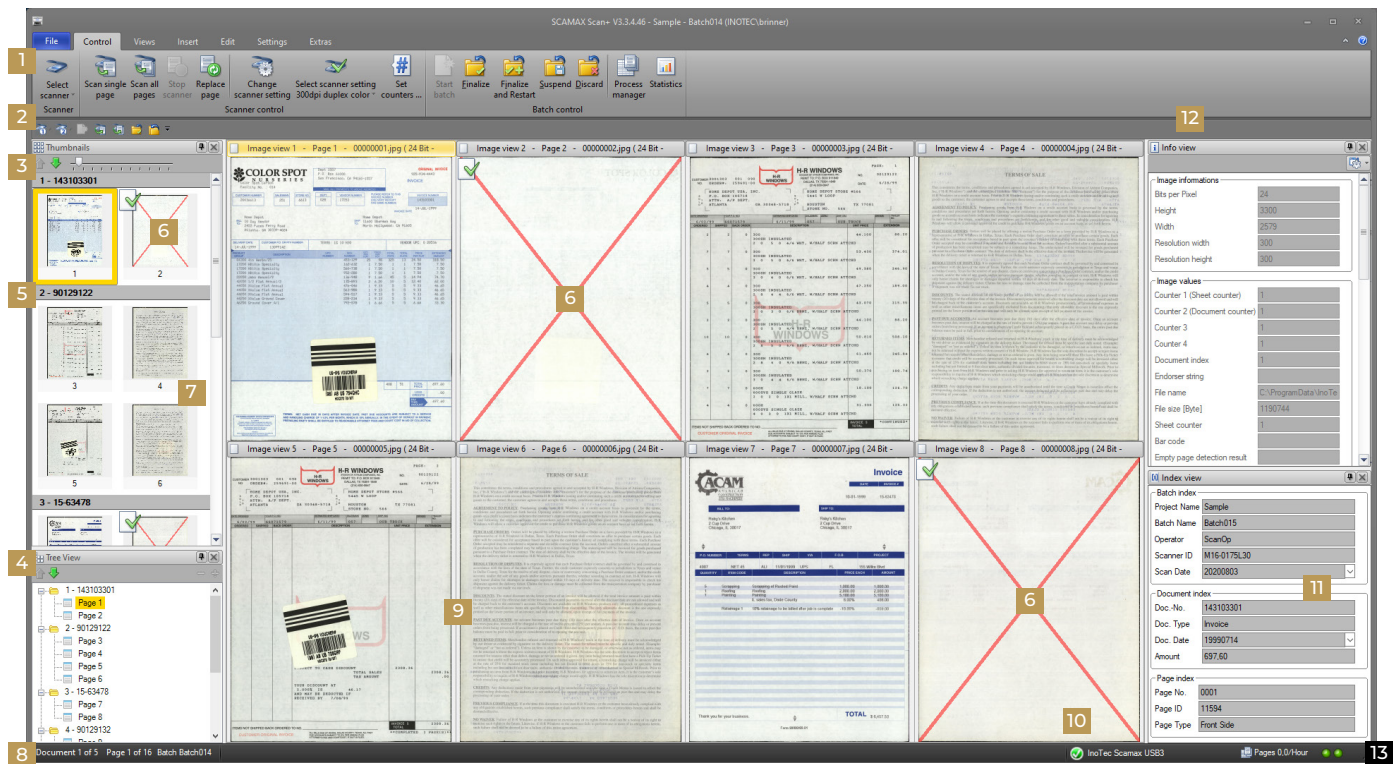
Intel Core i7, 8GB working memory,
Graphic card 1GB memory,
2GB free hard disk memory for the software
environment, SSD hard disk as temporary
scanning image memory.

Operating systems supported:
Windows 7/ 8.x/ 10/ 11

* = BMP, GIF, J2K, JP2, JPG, PDF/A, PNG, PNM, PSD, TGA, TIF, WMF
** = Codabar, Code 128, Code 32, Code 39, Data Matrix, EAN13, EAN 8,
Interleaved 2/5, Patchcode, PDF417, Postnet, Plus 2, Plus5, QR Code,
UPC A, UPC E

Clearly arranged for intuitive operation

The multilingual program surface in the office design offers easily understandable symbols and a freely definable quick function toolbar.



1. Function toolbar with easily understandable symbols
2. Freely definable quick function toolbar
3. Thumbnail view
4. Tree view
5. Document separation
6. Blank page detection with deletion marker
7. Page Counter
8. Document and page counter display
9. View of the scanned images
10. Scanner Status
11. Index Window
12. Info. Window
13. Display of the scanning performance

- High performance scan client for digitising and capturing documents
- Superb price/performance ratio-free updates
- Ideal for SME, scanning service providers, banks, insurance companies and public authorities

Get in touch



(024) 7625 4955



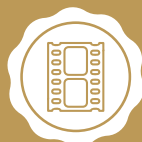
www.genus.uk



info@genus.uk



Hammond Close, Attleborough Fields,
Industrial Est, Nuneaton, Warwickshire,
CV11 6RY, UK



- Digitisation Solutions
- Scanning & Capture Services
- Document, Book & Microfilm Scanners



- Microfilm Solutions
- Fujifilm
- Conversion Services
- Conversion Hardware



- Technical Support
- Hardware Support
- Software Support



- Content Management
- Electronic Document Management
- Digital Asset Management



- Print Solutions
- Design & Print
- Web